



T-DRIVE 208C89061

The 208C89061 brake disc is synonymous with reliability

The T-drive disc, born from the experience gained in the top racing categories, is the latest evolution of Brembo racing discs. The special “T”-shape of the pins is the innovative element that strongly differentiates the T-drive from discs with drive pawls. This unique conformation transmits more braking torque, ensuring better resistance to thermal-mechanical stress, especially under extreme conditions of use, such as racing.

- ✓ OE-equivalent
- ✓ Brembo quality
- ✓ TUV approved
- ✓ Safety
- ✓ Performance
- ✓ Exclusive style
- ✓ Racing inspired
- ✓ Sports driving



Technical specifications



Diameter \emptyset
330 mm

Thickness (TH)
 mm

Number of holes

Hole diameter
 mm

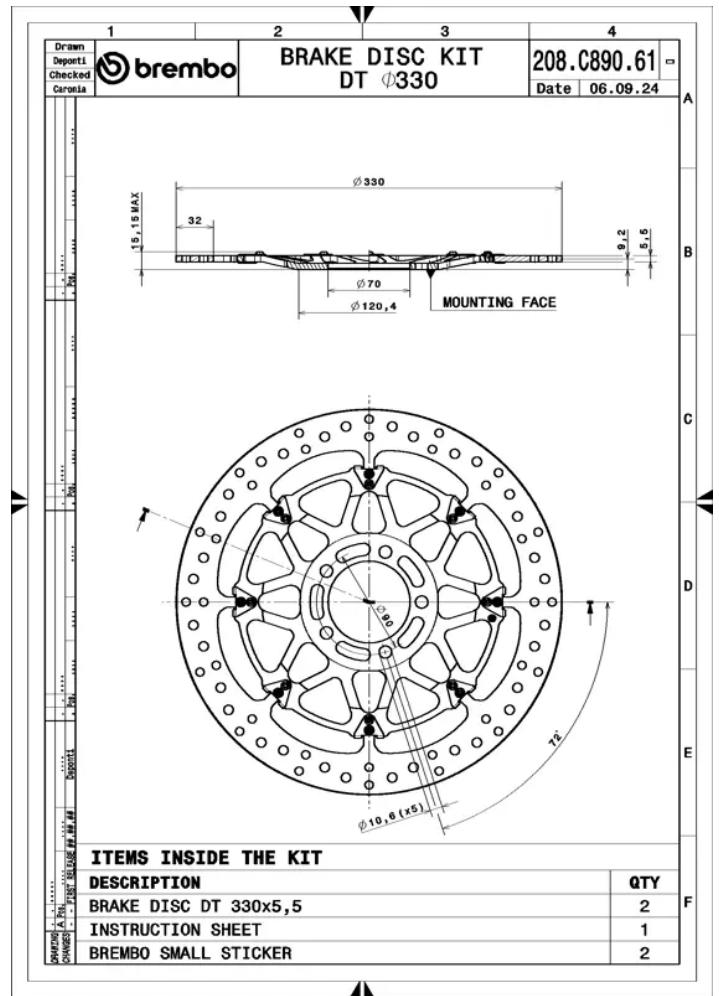
Centering (B)
 mm

Brake disc type
Floating

Surface width
32

Holes fixing (C)
 mm

Units per box
0



COMPATIBLE VEHICLES