



## T-DRIVE 208C89061

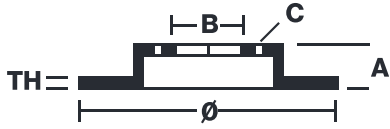
The 208C89061 brake disc is synonymous with reliability

The T-drive disc, born from the experience gained in the top racing categories, is the latest evolution of Brembo racing discs. The special “T”-shape of the pins is the innovative element that strongly differentiates the T-drive from discs with drive pawls. This unique conformation transmits more braking torque, ensuring better resistance to thermal-mechanical stress, especially under extreme conditions of use, such as racing.

- ✓ OE-equivalent
- ✓ Brembo quality
- ✓ TUV approved
- ✓ Safety
- ✓ Performance
- ✓ Exclusive style
- ✓ Racing inspired
- ✓ Sports driving



## Technical specifications



Diameter  $\emptyset$   
**330** mm

Thickness (TH)  
 mm

Number of holes

Hole diameter  
 mm

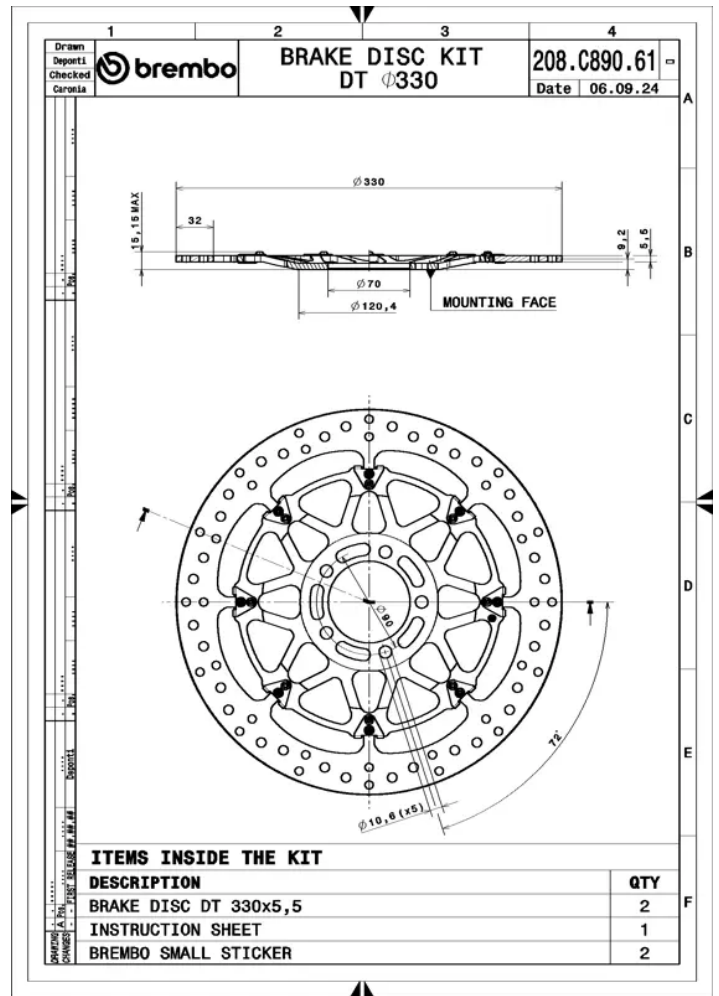
Centering (B)  
 mm

Brake disc type  
**Floating**

Surface width  
**32**

Holes fixing (C)  
 mm

Units per box  
**0**



COMPATIBLE VEHICLES