



DRUM

14.7257.20

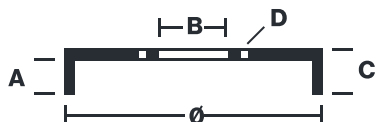
The 14.7257.20 drum is synonymous with reliability

Brembo has developed several design solutions for drum brakes which combine multiple materials to reduce the overall weight. The most popular range of lamellar graphite cast iron drums is supplemented by cast iron drums with a steel sprocket flange and aluminium drums, whereby only the inner part of the drum on which the shoes operate are made of lamellar cast iron, namely the brake band. Additionally drums with built-in bearing kit and hub are added to this range.

- ✓ OE-equivalent
- ✓ Brembo quality
- ✓ Safety
- ✓ Durability



Technical specifications



EAN code	Axle	Diameter
8020584725726	Rear	203 mm
Width	Height	Number of holes
50,5 mm	76	4
Centering	Max diameter	
51,9 mm	204,45 mm	

		14.7257.20	
AP	55314		
BRECO	BT 4747		
DIMENSION	203.3 x 50.7 mm		
MAX DIA	204.45 mm		
BALANCING	GUARANTEED		
MATERIAL	SUB-GROUP 1		
WEIGHT	5 kg		
<small>DATE : 22/02/2023 VERSION : 00</small>			

COMPATIBLE VEHICLES

COMPATIBLE OE PART NUMBERS

432009941R	DACIA
------------	-------

432023259R	DACIA
------------	-------

6001550811	DACIA
------------	-------

8200243735	DACIA
------------	-------

432006468R	RENAULT
------------	---------

432009941R	RENAULT
------------	---------

432023259R	RENAULT
------------	---------

432029521R	RENAULT
------------	---------

6001550811	RENAULT
------------	---------

8200243735	RENAULT
------------	---------

8200672836	RENAULT
------------	---------