



# MECHANICAL CLUTCH LEVER 110B01285

**Master cylinder 110B01285 peerless controllability**

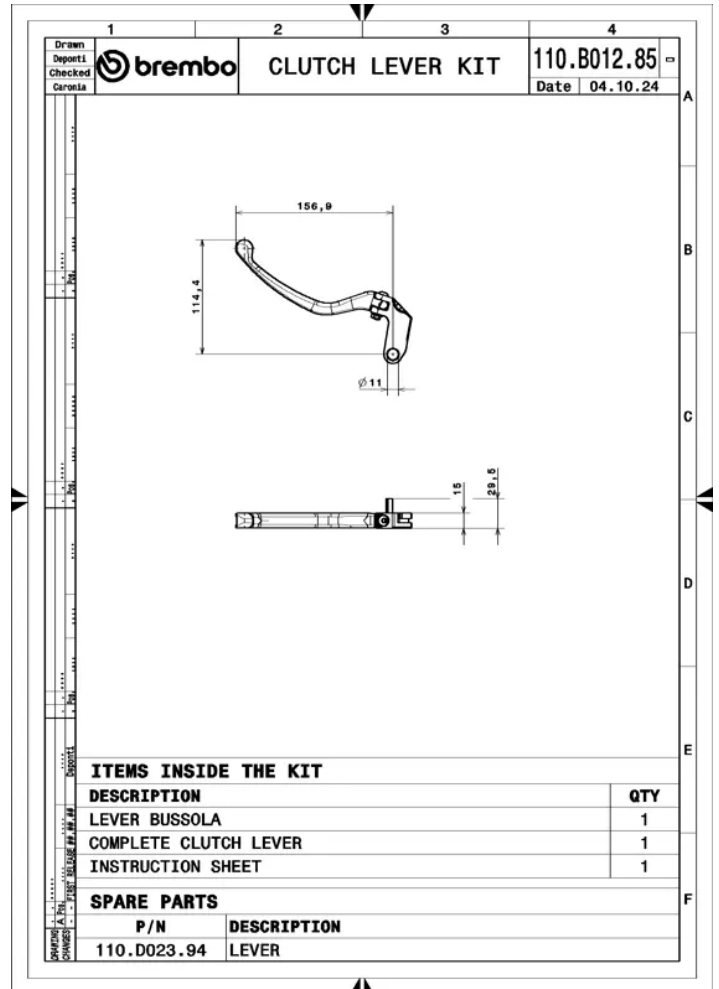
Mechanically operated clutch lever with hub carved from a billet and forged lever, interchangeable with the original lever and appearance that hints to the RCS master cylinder.

- ✓ OE-equivalent
- ✓ Brembo quality
- ✓ Safety
- ✓ Exclusive style



## Technical specifications

Lever ratio <b>As original</b>	Machining <b>Billet</b>	Piston size <b>As original</b>
Protection <b>Black</b>	Units per box <b>1</b>	



COMPATIBLE VEHICLES