



DRUM

14.B422.10

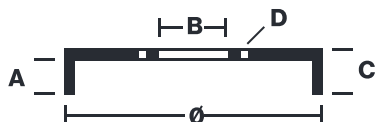
The **14.B422.10** drum is synonymous with reliability

Brembo has developed several design solutions for drum brakes which combine multiple materials to reduce the overall weight. The most popular range of lamellar graphite cast iron drums is supplemented by cast iron drums with a steel sprocket flange and aluminium drums, whereby only the inner part of the drum on which the shoes operate are made of lamellar cast iron, namely the brake band. Additionally drums with built-in bearing kit and hub are added to this range.



- ✓ OE-equivalent
- ✓ Brembo quality
- ✓ Safety
- ✓ Durability

Technical specifications



EAN code
8020584325209

Axle
Rear

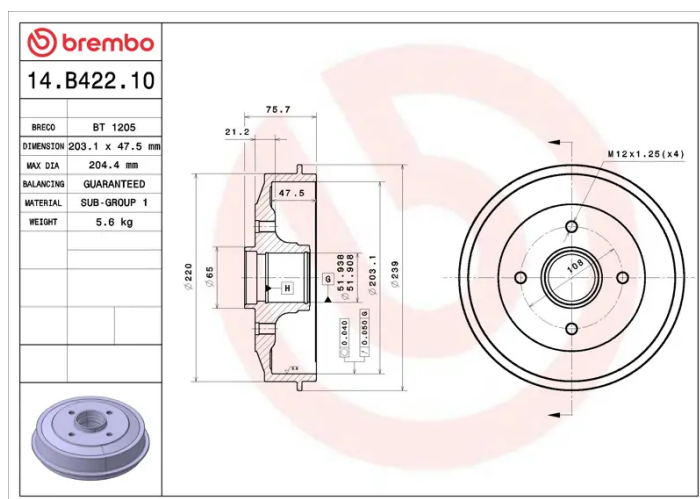
Diameter
203,1 mm

Width
47,5 mm

Height
75,7

Number of holes
4

Max diameter
204,4 mm



COMPATIBLE VEHICLES

COMPATIBLE OE PART NUMBERS

424759	CITROËN
424759	DS
424759	PEUGEOT