



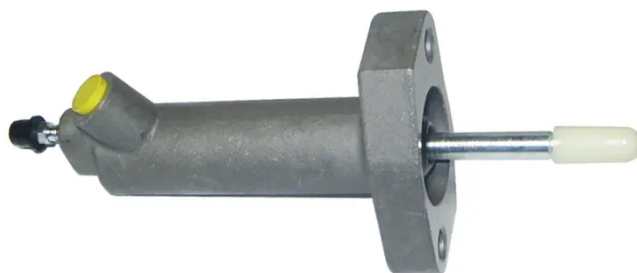
CLUTCH CYLINDER

E 06 016

The E 06 016 clutch cylinder is synonymous with reliability

Brembo's range of clutch cylinders consists not only of external clutch cylinders but also concentric clutch slave cylinders. The concentric clutch slave cylinder combines the functions of the thrust bearing and of the clutch cylinder in a single part. The clutch is therefore operated directly by the concentric actuator which performs the functions of the clutch cylinder and of the thrust bearing.

- ✓ OE-equivalent
- ✓ Brembo quality
- ✓ Safety
- ✓ Durability
- ✓ Durability test
- ✓ Tightness test



Technical specifications

EAN code	Axle	Diameter
8432509664070		20,64 mm
Threading	Material	
10 X 1	Aluminium	

COMPATIBLE VEHICLES

COMPATIBLE OE PART NUMBERS

21526764691	MINI
21526773698	MINI
21526785965	MINI
6764691	MINI
6773698	MINI
6785965	MINI