



DRUM

14.7079.10

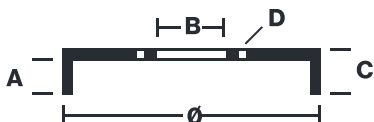
The 14.7079.10 drum is synonymous with reliability

Brembo has developed several design solutions for drum brakes which combine multiple materials to reduce the overall weight. The most popular range of lamellar graphite cast iron drums is supplemented by cast iron drums with a steel sprocket flange and aluminium drums, whereby only the inner part of the drum on which the shoes operate are made of lamellar cast iron, namely the brake band. Additionally drums with built-in bearing kit and hub are added to this range.



- ✓ OE-equivalent
- ✓ Brembo quality
- ✓ Safety
- ✓ Durability

Technical specifications



EAN code 8020584707913	Axle Rear	Diameter 200 mm
Width 51 mm	Height 67,5	Number of holes 4
Centering 60 mm	Max diameter 201,5 mm	

		14.7079.10	
AP	55208		
BREGO	BT 7079		
DIMENSION	200.1 x 50 mm		
MAX DIA	201.5 mm		
BALANCING	GUARANTEED		
MATERIAL	SUB-GROUP 1		
WEIGHT	4.9 kg		
E11	90R 02D01202/59686		
<small>DATE : 12/11/2021 VERSION : 00</small>			

COMPATIBLE VEHICLES

COMPATIBLE OE PART NUMBERS

11183502070	LADA
21083502070	LADA