



DRUM

14.C008.10

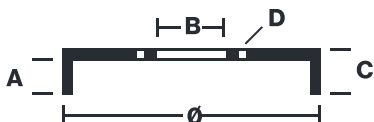
The 14.C008.10 drum is synonymous with reliability

Brembo has developed several design solutions for drum brakes which combine multiple materials to reduce the overall weight. The most popular range of lamellar graphite cast iron drums is supplemented by cast iron drums with a steel sprocket flange and aluminium drums, whereby only the inner part of the drum on which the shoes operate are made of lamellar cast iron, namely the brake band. Additionally drums with built-in bearing kit and hub are added to this range.



- ✓ OE-equivalent
- ✓ Brembo quality
- ✓ Safety
- ✓ Durability

Technical specifications



EAN code
8020584219775

Axle
Rear

Diameter
180 mm

Width
38,3 mm

Height
56

Number of holes
4

Centering
61,1 mm

Max diameter
181 mm

14.C008.10	
AP	55944
BRECO	BT 1159
DIMENSION	180 x 38.3 mm
MAX DIA	181 mm
BALANCING	GUARANTEED
MATERIAL	SUB-GROUP 1
WEIGHT	3 kg

DATE : 01/07/2021 VERSION : 00

COMPATIBLE VEHICLES

COMPATIBLE OE PART NUMBERS

42610SAA000	HONDA
42610SAAQ00	HONDA