



DRUM

14.7260.10

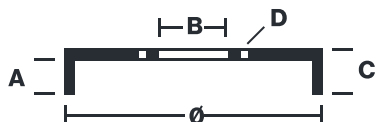
The 14.7260.10 drum is synonymous with reliability

Brembo has developed several design solutions for drum brakes which combine multiple materials to reduce the overall weight. The most popular range of lamellar graphite cast iron drums is supplemented by cast iron drums with a steel sprocket flange and aluminium drums, whereby only the inner part of the drum on which the shoes operate are made of lamellar cast iron, namely the brake band. Additionally drums with built-in bearing kit and hub are added to this range.

- ✓ OE-equivalent
- ✓ Brembo quality
- ✓ Safety
- ✓ Durability



Technical specifications



EAN code	Axle	Diameter
8020584726013	Rear	185 mm
Width	Height	Number of holes
36,5 mm	53,1	4
Centering	Max diameter	
59 mm	186,8 mm	

14.7260.10	
AP	55231
BREGO	BT 7260
DIMENSION	185.4 x 36.5 mm
MAX DIA	186.8 mm
BALANCING	GUARANTEED
MATERIAL	SUB-GROUP 1
WEIGHT	3.1 kg

DATE : 26/05/2021 VERSION : 00

COMPATIBLE VEHICLES

COMPATIBLE OE PART NUMBERS

46448407 FIAT

4644847 FIAT

5923606 FIAT

7672577 FIAT

98601861 FIAT
