



T-DRIVE 208A98553

The 208A98553 brake disc is synonymous with reliability

The T-drive disc, born from the experience gained in the top racing categories, is the latest evolution of Brembo racing discs. The special “T”-shape of the pins is the innovative element that strongly differentiates the T-drive from discs with drive pawls. This unique conformation transmits more braking torque, ensuring better resistance to thermal-mechanical stress, especially under extreme conditions of use, such as racing.

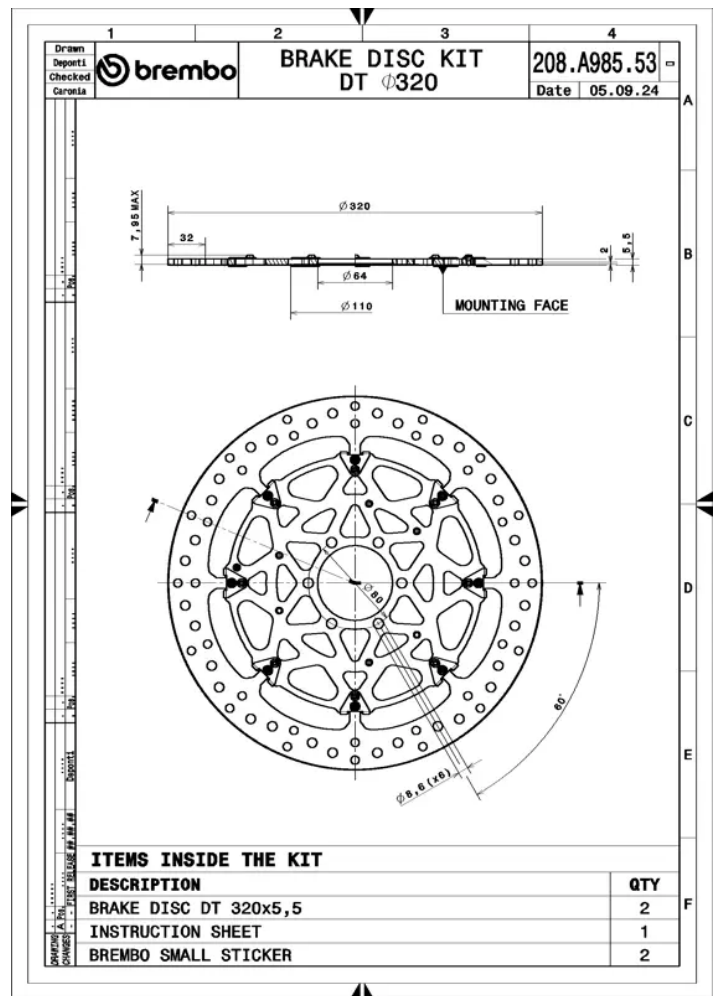
- ✓ OE-equivalent
- ✓ Brembo quality
- ✓ TUV approved
- ✓ Safety
- ✓ Performance
- ✓ Exclusive style
- ✓ Racing inspired
- ✓ Sports driving



Technical specifications



| | | |
|---------------|----------------|------------------|
| Diameter Ø | Thickness (TH) | Number of holes |
| 320 mm | 5,5 mm | 6 |
| Hole diameter | Centering (B) | Brake disc type |
| 8,6 mm | 64 mm | Floating |
| Off set (A) | Surface width | Holes fixing (C) |
| 2 mm | 32 | 80 mm |
| Units per box | | |
| 2 | | |



COMPATIBLE VEHICLES