



T-DRIVE 208C89061

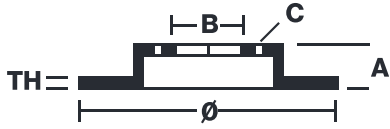
The 208C89061 brake disc is synonymous with reliability

The T-drive disc, born from the experience gained in the top racing categories, is the latest evolution of Brembo racing discs. The special “T”-shape of the pins is the innovative element that strongly differentiates the T-drive from discs with drive pawls. This unique conformation transmits more braking torque, ensuring better resistance to thermal-mechanical stress, especially under extreme conditions of use, such as racing.

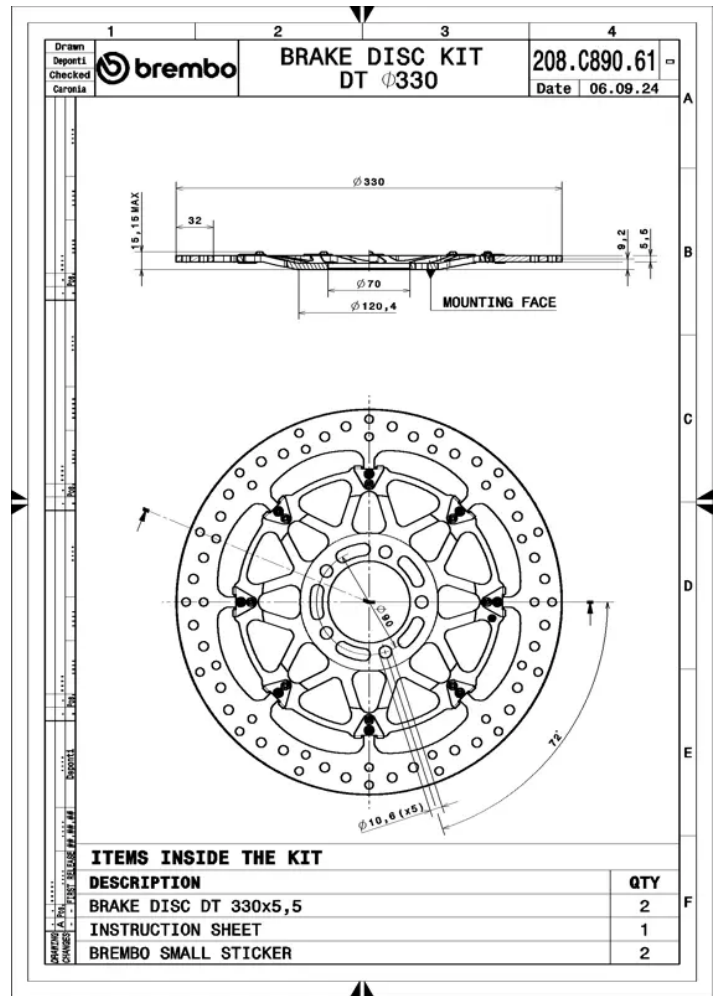
- ✓ OE-equivalent
- ✓ Brembo quality
- ✓ TUV approved
- ✓ Safety
- ✓ Performance
- ✓ Exclusive style
- ✓ Racing inspired
- ✓ Sports driving



Technical specifications



| | | |
|---------------|------------------|-----------------|
| Diameter Ø | Thickness (TH) | Number of holes |
| 330 mm | mm | |
| Hole diameter | Centering (B) | Brake disc type |
| mm | mm | Floating |
| Surface width | Holes fixing (C) | |
| 32 | mm | |
| Units per box | | |
| 0 | | |



COMPATIBLE VEHICLES