



## GP2-SS 120A44110

The 120A44110 caliper is synonymous with reliability

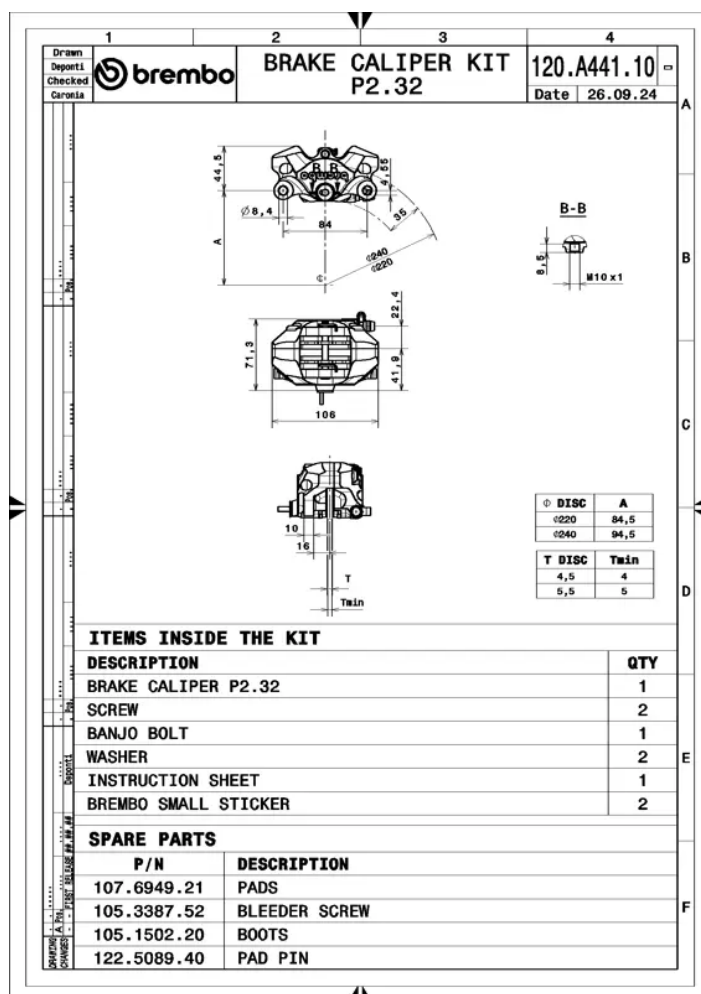
Caliper carved from a billet in two pieces. This processing provides properties of maximum rigidity and lightness, that are reflected in its excellent performance.

- ✓ OE-equivalent
- ✓ Brembo quality
- ✓ Safety
- ✓ Performance
- ✓ Exclusive style
- ✓ Sports driving



### Technical specifications

Piston size	Number of pistons	Surface width
<b>34 mm</b>	<b>4</b>	<b>35 mm</b>
Offset	Pads included	Caliper material
<b>16 mm</b>	<b>Yes</b>	<b>Aluminium</b>
Protection	Piston material	Weight without pads
<b>Anodised</b>	<b>Aluminium</b>	<b>581 gr</b>
Units per box		
<b>1</b>		



COMPATIBLE VEHICLES