



DRUM

14.3283.10

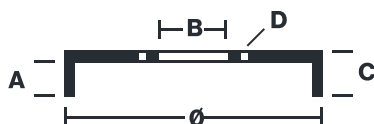
The 14.3283.10 drum is synonymous with reliability

Brembo has developed several design solutions for drum brakes which combine multiple materials to reduce the overall weight. The most popular range of lamellar graphite cast iron drums is supplemented by cast iron drums with a steel sprocket flange and aluminium drums, whereby only the inner part of the drum on which the shoes operate are made of lamellar cast iron, namely the brake band. Additionally drums with built-in bearing kit and hub are added to this range.



- ✓ OE-equivalent
- ✓ Brembo quality
- ✓ Safety
- ✓ Durability

Technical specifications



EAN code 8020584328316	Axle Rear	Diameter 228 mm
Width 50,5 mm	Height 66	Number of holes 4
Centering 71 mm	Max diameter 230 mm	

		14.3283.10	
AP	55055		
BREGO	BT 3283		
DIMENSION	228.5 x 50.5 mm		
MAX DIA	230 mm		
BALANCING	GUARANTEED		
MATERIAL	SUB-GROUP 1		
WEIGHT	5.7 kg		
E11	90R 02D01202/59686		
<small>DATE : 06/11/2021 VERSION : 00</small>			

COMPATIBLE VEHICLES

COMPATIBLE OE PART NUMBERS

424724	CITROËN
424724	PEUGEOT