



DRUM

14.7096.10

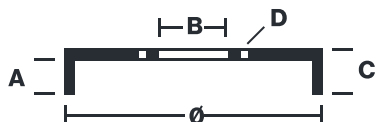
The 14.7096.10 drum is synonymous with reliability

Brembo has developed several design solutions for drum brakes which combine multiple materials to reduce the overall weight. The most popular range of lamellar graphite cast iron drums is supplemented by cast iron drums with a steel sprocket flange and aluminium drums, whereby only the inner part of the drum on which the shoes operate are made of lamellar cast iron, namely the brake band. Additionally drums with built-in bearing kit and hub are added to this range.



- ✓ OE-equivalent
- ✓ Brembo quality
- ✓ Safety
- ✓ Durability

Technical specifications



EAN code 8020584709610	Axle Rear	Diameter 254 mm
Width 62 mm	Height 83	Number of holes 6
Centering 93,5 mm	Max diameter 256 mm	

		14.7096.10	
AP	55216		
SRECO	BT 7096		
DIMENSION	254.1 x 57.5 mm		
MAX DIA	256 mm		
BALANCING	GUARANTEED		
MATERIAL	SUB-GROUP 1		
WEIGHT	7.3 kg		
	90R		
	02D01202/59689		
<small>DATE : 07/02/2022 VERSION : 00</small>			

COMPATIBLE VEHICLES

COMPATIBLE OE PART NUMBERS

MB193596	DODGE
MB534245	DODGE
MB193596	MITSUBISHI
MB534235	MITSUBISHI
MB534245	MITSUBISHI
MB950951	MITSUBISHI
MB193596	PLYMOUTH
MB534235	PLYMOUTH
MB534245	PLYMOUTH