



# DRUM

## 14.9384.10

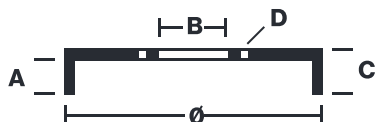
The 14.9384.10 drum is synonymous with reliability

Brembo has developed several design solutions for drum brakes which combine multiple materials to reduce the overall weight. The most popular range of lamellar graphite cast iron drums is supplemented by cast iron drums with a steel sprocket flange and aluminium drums, whereby only the inner part of the drum on which the shoes operate are made of lamellar cast iron, namely the brake band. Additionally drums with built-in bearing kit and hub are added to this range.



- ✓ OE-equivalent
- ✓ Brembo quality
- ✓ Safety
- ✓ Durability

### Technical specifications



EAN code  
**8020584938416**

Axle  
**Rear**

Diameter  
**200 mm**

Width  
**50,5 mm**

Height  
**59**

Number of holes  
**4**

Centering  
**65 mm**

Max diameter  
**201,5 mm**

<b>14.9384.10</b>	
AP	55281
BRECO	BT 9384
DIMENSION	200.1 x 50.3 mm
MAX DIA	201.5 mm
BALANCING	GUARANTEED
MATERIAL	SUB-GROUP 1
WEIGHT	3.8 kg
	90R
	02D01202/59678

DATE : 06/07/2021 VERSION : 00

**COMPATIBLE VEHICLES**

## COMPATIBLE OE PART NUMBERS

150609617	SEAT
-----------	------

---

6X0609617A	SEAT
------------	------

---

150609617	SKODA
-----------	-------

---

150609617	VW
-----------	----

---

6X0609617A	VW
------------	----

---