



## T-DRIVE 208C89022

The 208C89022 brake disc is synonymous with reliability

The T-drive disc, born from the experience gained in the top racing categories, is the latest evolution of Brembo racing discs. The special “T”-shape of the pins is the innovative element that strongly differentiates the T-drive from discs with drive pawls. This unique conformation transmits more braking torque, ensuring better resistance to thermal-mechanical stress, especially under extreme conditions of use, such as racing.

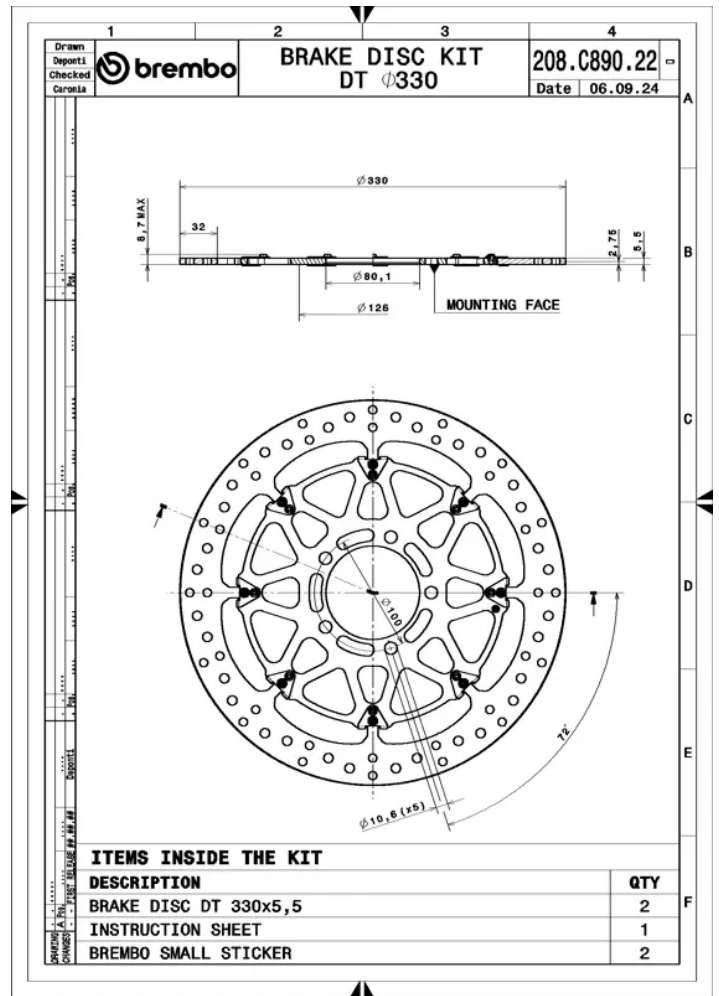
- ✓ OE-equivalent
- ✓ Brembo quality
- ✓ TUV approved
- ✓ Safety
- ✓ Performance
- ✓ Exclusive style
- ✓ Racing inspired
- ✓ Sports driving



## Technical specifications



Diameter $\emptyset$	Thickness (TH)	Number of holes
<b>330</b> mm	mm	
Hole diameter	Centering (B)	Brake disc type
mm	mm	<b>Floating</b>
Surface width	Holes fixing (C)	
<b>32</b>	mm	
Units per box		
<b>0</b>		



**COMPATIBLE VEHICLES**