



DRUM

14.7257.10

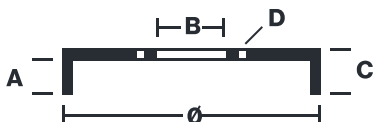
The 14.7257.10 drum is synonymous with reliability

Brembo has developed several design solutions for drum brakes which combine multiple materials to reduce the overall weight. The most popular range of lamellar graphite cast iron drums is supplemented by cast iron drums with a steel sprocket flange and aluminium drums, whereby only the inner part of the drum on which the shoes operate are made of lamellar cast iron, namely the brake band. Additionally drums with built-in bearing kit and hub are added to this range.

- ✓ OE-equivalent
- ✓ Brembo quality
- ✓ Safety
- ✓ Durability



Technical specifications



EAN code
8020584725719

Axle
Rear

Diameter
203 mm

Width
50,5 mm

Height
76

Number of holes
4

Centering
51,9 mm

Max diameter
204,5 mm

		14.7257.10	
AP	55228		
BRECO	BT 7257		
DIMENSION	203.3 x 50.5 mm		
MAX DIA	204.45 mm		
BALANCING	GUARANTEED		
MATERIAL	SUB-GROUP 1		
WEIGHT	5 kg		
		<p>DATE : 22/02/2023 VERSION : 00</p>	

COMPATIBLE VEHICLES

COMPATIBLE OE PART NUMBERS

432026294R	DACIA
------------	-------

6001547703	DACIA
------------	-------

7700839322	DACIA
------------	-------

432026294R	RENAULT
------------	---------

6001547703	RENAULT
------------	---------

7700428821	RENAULT
------------	---------

7700827866	RENAULT
------------	---------

7700839322	RENAULT
------------	---------