

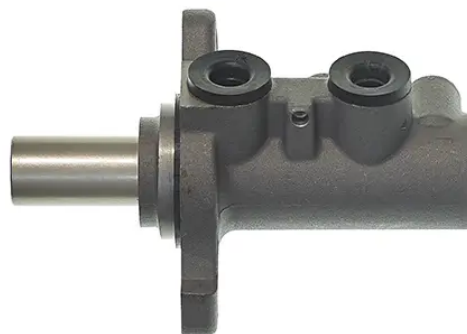


# CLUTCH MASTER CYLINDER M 06 032

The M 06 032 brake master cylinder is synonymous with reliability

For the braking system to work well, all the components of the brake master cylinder must meet the highest standards of quality and strength. All Brembo brake master cylinders are subjected to complete in-line checks which guarantee conformity to the strictest standards.

- ✓ OE-equivalent
- ✓ Brembo quality
- ✓ Safety
- ✓ Durability
- ✓ Durability test
- ✓ Tightness test
- ✓ Burst test



## Technical specifications

EAN code	Axle	Diameter
8432509652954		23,81 mm
Threading	Braking system	Material
12 x 1 (2)	TRW	Aluminium

COMPATIBLE VEHICLES

## COMPATIBLE OE PART NUMBERS

34336756585	MINI
34336772855	MINI
34336785192	MINI
34336786585	MINI
6772855	MINI
6785192	MINI
6786585	MINI