



DRUM

14.5603.10

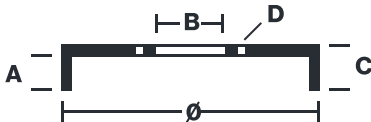
The 14.5603.10 drum is synonymous with reliability

Brembo has developed several design solutions for drum brakes which combine multiple materials to reduce the overall weight. The most popular range of lamellar graphite cast iron drums is supplemented by cast iron drums with a steel sprocket flange and aluminium drums, whereby only the inner part of the drum on which the shoes operate are made of lamellar cast iron, namely the brake band. Additionally drums with built-in bearing kit and hub are added to this range.



- ✓ OE-equivalent
- ✓ Brembo quality
- ✓ Safety
- ✓ Durability

Technical specifications



EAN code 8020584560310	Axle Rear	Diameter 260 mm
Width 64 mm	Height 83	Number of holes 5
Centering 85 mm	Max diameter 261,5 mm	

		14.5603.10	
AP	55163		
BRECO	BT 5603		
DIMENSION	260.1 x 64 mm		
MAX DIA	261.5 mm		
BALANCING	GUARANTEED		
MATERIAL	SUB-GROUP 1		
WEIGHT	9.6 kg		
E11	90R 02D01202/59696		
<small>DATE : 17/12/2021 VERSION : 00</small>			

COMPATIBLE VEHICLES

COMPATIBLE OE PART NUMBERS

6014235001 MERCEDES-BENZ