

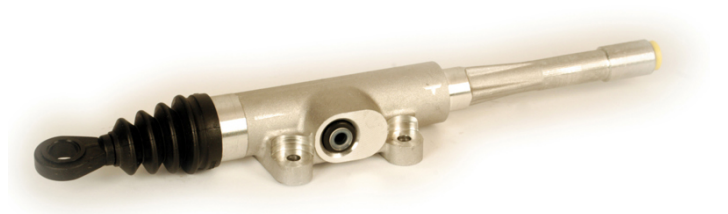


BRAKE MASTER CYLINDER

C 06 002

The C 06 002 brake master cylinder is synonymous with reliability

Brembo's hydraulic range not only contains braking system components, but also clutch components, including clutch pipes and cylinders, as well as the brake master cylinder. All Brembo brake master cylinders are subjected to rigid operating, tightness (hydraulic and pneumatic) and durability tests.



- ✓ OE-equivalent
- ✓ Brembo quality
- ✓ Safety
- ✓ Durability
- ✓ Durability test
- ✓ Tightness test

Technical specifications

EAN code	Axle	Diameter
8432509605486		19,05 mm
Threading	Material	
10 x 1	Aluminium	

COMPATIBLE VEHICLES

COMPATIBLE OE PART NUMBERS

1152658	BMW
1154178	BMW
1154580	BMW
1156000	BMW
21521152658	BMW
21521154178	BMW
21521154580	BMW
21521156000	BMW
21524126128	BMW
4126128	BMW