



UPGRADE GT KIT

1B1.8030A_




The 1B1.8030A_ GT kit is synonymous with superior performance

Complete braking systems, comprising components derived from the world of motorsports and offering unrivalled levels of technology on the market. They feature aluminium radial-mounted fixed calipers, with opposing pistons. Depending on the type of system and the required performance level, the calipers can either be in two-parts, monoblock or even monoblock machined from solid billet metal. The uprated brake discs can be integral (one-piece) or composite, drilled or slotted.



- ✓ Brembo quality
- ✓ Safety
- ✓ Performance
- ✓ Comfort
- ✓ Sports driving
- ✓ Sparty look

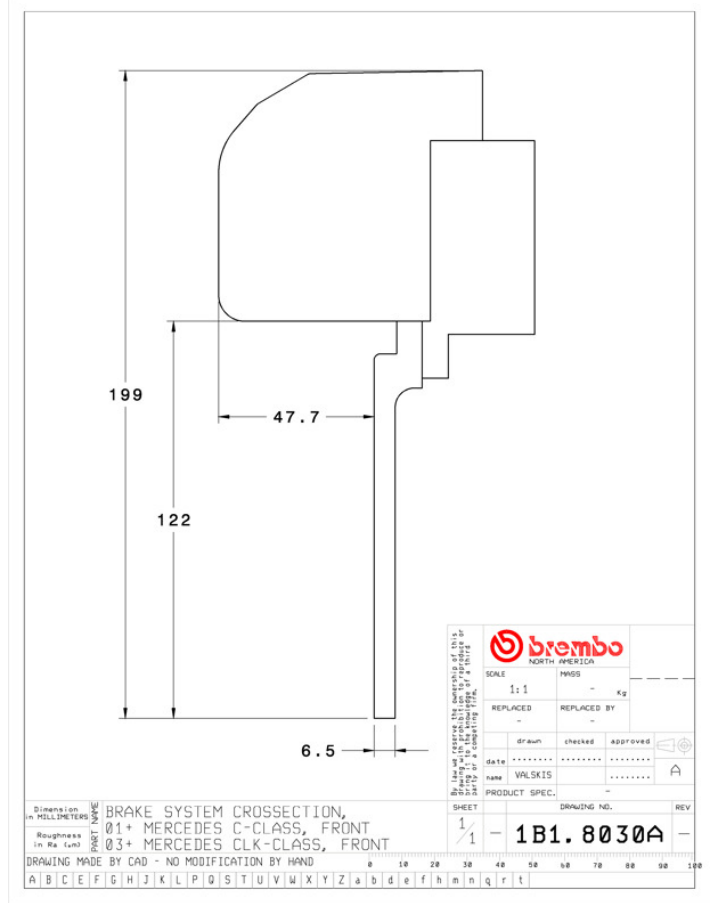
Available in 3 colours

 1B1.8030A1  1B1.8030A2  1B1.8030A3

Technical specifications



Axle	Diameter	Thickness (TH)
Front	355 mm	32 mm
Caliper pistons	Disc type	Caliper type
4	2 pieces	2 pieces



		SCALE	1:1
		REPLACED	REPLACED BY
DATE	name	checked	approved
date	name	checked	approved
PRODUCT SPEC.			

Dimension in mm	01+ MERCEDES C-CLASS, FRONT	SHEET	1	DRAWING NO.	1B1.8030A	REV																							
Roughness in Ra (µm)	03+ MERCEDES CLK-CLASS, FRONT																												
DRAWING MADE BY CAD - NO MODIFICATION BY HAND																													
A	B	C	E	F	G	H	J	K	L	P	S	T	U	V	W	X	Y	Z	a	b	d	e	f	h	m	n	q	r	t

COMPATIBLE VEHICLES