



# UPGRADE GT KIT

## 2P2.9010A\_

The 2P2.9010A\_ GT kit is synonymous with superior performance

Complete braking systems, comprising components derived from the world of motorsports and offering unrivalled levels of technology on the market. They feature aluminium radial-mounted fixed calipers, with opposing pistons. Depending on the type of system and the required performance level, the calipers can either be in two-parts, monoblock or even monoblock machined from solid billet metal. The uprated brake discs can be integral (one-piece) or composite, drilled or slotted.



- ✓ Brembo quality
- ✓ Safety
- ✓ Performance
- ✓ Comfort
- ✓ Sports driving
- ✓ Sparty look

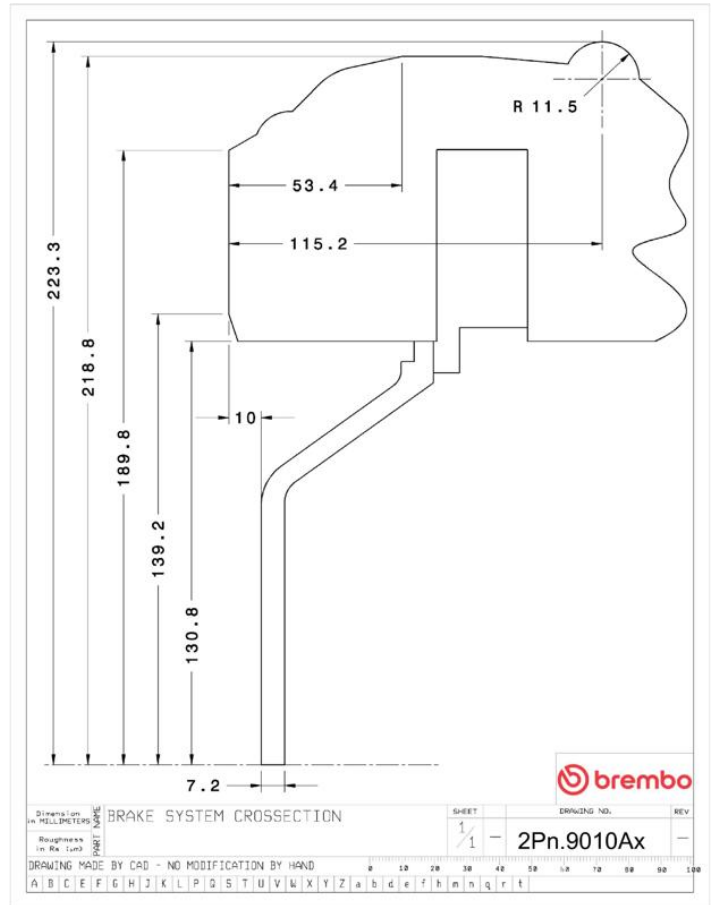
Available in 4 colours

- 2P2.9010A1
- 2P2.9010A2
- 2P2.9010A3
- 2P2.9010A5

## Technical specifications



|                 |                 |                  |
|-----------------|-----------------|------------------|
| Axle            | Diameter        | Thickness (TH)   |
| Rear            | <b>380 mm</b>   | <b>28 mm</b>     |
| Caliper pistons | Disc type       | Caliper type     |
| <b>4</b>        | <b>2 pieces</b> | <b>Monoblock</b> |



**COMPATIBLE VEHICLES**