



DRUM

14.A690.10

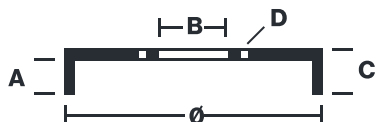
The 14.A690.10 drum is synonymous with reliability

Brembo has developed several design solutions for drum brakes which combine multiple materials to reduce the overall weight. The most popular range of lamellar graphite cast iron drums is supplemented by cast iron drums with a steel sprocket flange and aluminium drums, whereby only the inner part of the drum on which the shoes operate are made of lamellar cast iron, namely the brake band. Additionally drums with built-in bearing kit and hub are added to this range.

- ✓ OE-equivalent
- ✓ Brembo quality
- ✓ Safety
- ✓ Durability



Technical specifications



EAN code
8020584023105

Axle
Rear

Diameter
180 mm

Width
41 mm

Height
82

Number of holes
4

Centering
47 mm

Max diameter
182 mm

14.A690.10	
AP	55334
SRECO	BT 1690
DIMENSION	180.1 x 41 mm
MAX DIA	182 mm
BALANCING	GUARANTEED
MATERIAL	SUB-GROUP 1
WEIGHT	5.2 Kg

DATE : 22/07/2022 VERSION : 00

COMPATIBLE VEHICLES

COMPATIBLE OE PART NUMBERS

4351175F02

SUZUKI